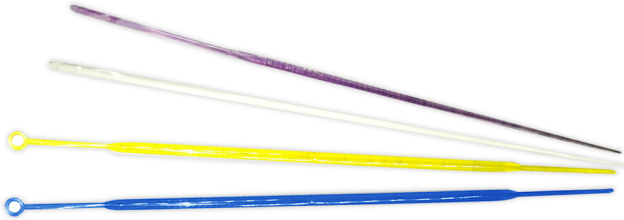




INOCULATION LOOP AND NEEDLES

Calibrated 1 and 10 μ L disposable loops, made of ABS material (soft flexible plastic), for a smooth, problem free planting and streaking of cultures. Our loops do not cut or gouge the agar surface during streaking.



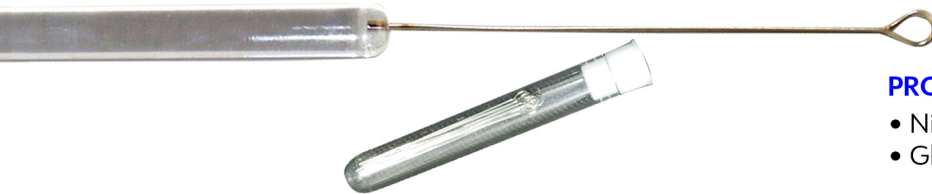
PRODUCT SPECIFICATIONS:

- 10 μ L, Inoculation Loop with Needle Disposable
- 1 μ L, Inoculation Loop with Needle Disposable
- 1 μ L + 10 μ L, Inoculation Loop Disposable
- Inoculation Needle Disposable



NICHROME WIRE WITH GLASS HANDLE

Consist of looped nichrome wire fixed into a brass handle. It is easy to sterilize and reuse because nichrome wire resists deterioration with repeated heat/cooling cycles. Flame sterilization is a very simple method of killing microorganisms on an inoculating loop.

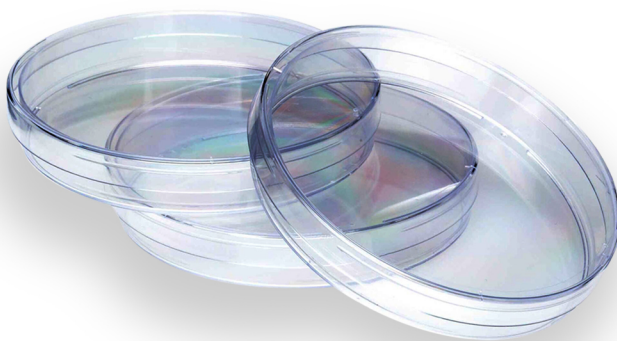


PRODUCT SPECIFICATIONS:

- Nichrome Wire, 10 pcs per tube
- Glass Handle or Brass, Nichrome Wire

PETRI DISHES

Petri dishes are shallow cylindrical containers with fitted lids that are designed specifically for microbiology or cell culture use. Petri dishes are typically made of borosilicate glass or clear plastics (usually polystyrene or polycarbonate) and comes in a variety of sizes. They can be disposable or reusable types able to withstand repeated sterilization procedures (wet or dry).



PRODUCT SPECIFICATIONS:

- 60 mm, 1 Room
- 90 mm, 1 Room, 90 x 15 mm
- 90 mm, 2 rooms
- 90 mm, 3 Rooms
- 150 mm, 1 Room



TruLaboratories
Corporation

+632 82-TRULAB (878522)
+632 8287.3683
+63917.878.2288 • +63925.878.2288
www.trulaboratories.com